

South West London Investment Fund

Summary of Awards for 2023-25

21 March 2024



Introduction

The South West London Integrated Care Partnership Investment (ICP) Fund was established to support delivery of the South West London ICP Strategy. The funding which was agreed by the ICB during the South West London Integrated Care Board(ICB) financial planning process which is comprised of two strands: Integrated Care Partnership Strategic Priorities and Health Inequalities:

The ICP Priorities Fund for 2023-25 has a budget of £5 million and is targeted to support delivery of the Integrated Care Partnership Strategy, with 80% of the funding allocated to the ICP Workforce priority and the remainder made available for the remaining ICP priorities and cross cutting themes.

The Health Inequalities Fund is targeted on reducing Health Inequalities (Core20+5) across South West London. The Health Inequalities fund which has been established from national NHS funding will be focussed on existing and new projects with a distribution of funding of 75% for existing schemes and 25% for new schemes. Approximately £4.3 million funding is available for schemes delivering initiatives between January 2024 and March 2025.

Applications opened on Monday 2 October and closed on Friday 10 November 2023. Successful applicants were informed in December 2023 and all successful schemes are in the process of being mobilised. We will share further information about these schemes on our website in the coming months.

This slide deck sets out the awarding process, our analysis of the schemes awarded by organisation type and geography and provides summary descriptions for all successful schemes. This information is provided for both strands of the Investment Fund.





South West London Integrated Care Partnership Priorities Fund

Awards summary



ICP Priorities fund summary

The South West London Integrated Care Partnership (ICP) Priorities Fund for 2023-25 is targeted to support delivery of the Integrated Care Partnership Strategy and has a funding allocation of £5 million. The ICP workforce priority is receiving 80% of the allocation and the remaining 20% is being distributed across the remaining ICP priorities and cross cutting themes.

The ICP Priorities Fund opened on Monday 2 October and closed on Friday 10 November. To promote the fund, provide information about how to apply and to encourage collaboration we held a launch session, a general information session and eight collaboration sessions for the ICP cross cutting themes and strategic priorities during the six-week application period. These sessions were attended by over 250 participants from across SWL. During the sessions we described what we would be looking for in a successful application;

- Alignment To ICP Priorities: Strong schemes working at scale that support the delivery of our system-wide priorities and actions
- Funding: A clear indication of how funding will be spent
- Impact: Applications that articulate the impact they will make and can evidence why their proposed scheme is credible
- Measurement: Applications that clearly demonstrate how they will measure that impact.

The ICP Priorities Fund received 174 applications from a wide range of partners totalling £30,379,845. Senior responsible officers and subject matter experts came together to assess the applications during November, with final funding panels held in December. We have awarded 23 schemes totalling £4,118,431.25

This slide deck provides details of the awarding process, the volumes of applications throughout the stages of the process and detailed analysis of the schemes by theme, organisation type and geography.

Summary of approach

The ICP Priorities Fund opened on Monday 2 October and closed on Friday 10 November. We undertook a two stage process over a five-week period to determine the successful schemes. The two stages are described below:

Stage 1: Quality Assurance & Expert Review (shortlisting)

13 November – 4 December 2023

- All 174 applications were reviewed to ensure all specified information was available to support reviewers.
 - Scoring criteria and guidance was developed and each reviewer briefed to ensure a consistent approach to scoring.
 - Each reviewing team was assigned applications from the priority relevant to their expertise.
 - Submitted applications were reviewed by a minimum of two South West London Integrated Care System senior stakeholders using the online system. The system also applied weighting to the scoring of the applications.
 - Applications were ranked by final weighted score and the shortlisted status was provided by the reviewers.
 - Arising queries were raised and resolved.
- **We reviewed 174 bids totalling £30,379,845.**
 - **26 applications were shortlisted, totalling £4,895,149**

Stage 2: Financial review and Panel 4 December – 20 December 2023

- All of the shortlisted applications underwent financial review and further queries were raised and resolved.
 - To support the final awarding decision, 11 of the 26 applications were requested to join an interview panel comprised of senior stakeholders from across South West London. The panel was required due to the value of funding requested. 3 of the 11 applications were rejected at this stage.
 - Subsequent to the panel a number of further queries were raised and resolved.
 - All applicants were notified of their successful or unsuccessful status prior to Christmas 2023.
- **23 applications have been awarded, totalling £4,118,431**

Stage 2: Awarding summary

Following the review phase, **26 applications** were shortlisted with 11 of the 26 attending an interview panel resulting in 3 rejected schemes. This resulted in a final of 23 awarded schemes. The applications per priority are detailed in Table 1 below, detailing the summary of the applications by review phase.

Table 1: applications by scheme priority throughout the stages of the awarding process.

Priority	Bid envelope	Number submitted	Value (£) of submitted bids	Number shortlisted	Value (£) of shortlisted	Number awarded	Value (£) of awarded
Tackling our system-wide workforce challenges	£3,800,000.00	71	£17,644,006.00	14	£3,807,714.25	12	£3,188,388.25
Supporting the health and care needs of children and young people	£800,000.00	14	£1,587,531.00	2	£223,070.00	2	£223,070.00
Community based support for older and frail people	£800,000.00	14	£2,061,439.00	2	£201,645.00	2	£201,645.00
Preventing ill-health, promoting self-care, and supporting people to manage their long-term conditions	£800,000.00	31	£4,674,977.00	2	£255,675.00	2	£254,175.00
Positive focus on mental well-being	£800,000.00	30	£3,161,224.00	2	£232,892.00	1	£83,000.00
Cross cutting theme: Championing the green agenda	£150,000.00	1	£27,448.00	1	£27,448.00	1	£27,448.00
Cross cutting theme: Championing equality, diversity, and inclusion	£150,000.00	9	£741,117.00	2	£77,705.00	2	£77,705.00
Cross cutting theme: Elevating the patient, carer and community voice	£150,000.00	4	£488,103.00	1	£69,000.00	1	£69,000.00
Totals	£4,750,000.00	174	£30,379,845.00	26	£4,895,149.25	23	£4,118,431.25

Summary by organisation type

The majority of applications were submitted by the voluntary sector and NHS Trusts (88/174), with the awarded applications being largely delivered by the voluntary sector (30.4%) and organisations working together at scale (multi-agency, 30.4%)

Table 2 below details the values of the submitted and awarded applications by organisation type.

Table 2: Submitted and awarded applications by organisation type and percentage of successful applications by organisation type

Organisation type	Submitted		Awarded	
	Number	Value (£)	Number	Value (£)
Clinical network	1	£256,879.00	0	£0.00
Company (established provider of NHS services)	7	£1,055,994.00	0	£0.00
Company (other)	11	£1,488,178.00	3	£447,740.00
General practice	10	£2,159,023.00	0	£0.00
Local Authority	13	£2,707,350.00	2	£240,200.00
System Wide Multi-agency	7	£2,280,277.25	7	£2,280,277.25
NHS trust	40	£6,466,216.75	3	£434,035.00
Primary care network	2	£606,479.00	0	£0.00
Provider collaborative	5	£1,617,417.00	0	£0.00
Social Enterprise	8	£775,245.00	0	£0.00
South West London ICB	19	£4,215,168.00	1	£150,000.00
South West London ICB : Place	3	£536,579.00	0	£0.00
Voluntary sector organisation	48	£6,215,039.00	7	£567,679.00
Totals	174	£30,379,845.00	23	£4,118,431.25

N.B. 'Company other' category reflects smaller organisations e.g. Integrated Care Support Services (formerly Wandsworth Training Hub)

Summary by priority: Workforce, CYP and Older people

Table 3: Submitted and awarded applications submitted for Workforce and the specific actions

Workforce: Action	Submitted	Awarded
Designing our future workforce, including new or different roles	26	3
Making South West London a great place to work	15	1
Supporting local people into employment	18	7
Targeting difficult to recruit health and care roles	12	1

Table 4: Submitted and awarded applications submitted for Children and young people and the specific actions

Children and young people: Action	Submitted	Awarded
Working together to improve outcomes for children and young people with Special Educational Needs and Disabilities (SEND)	3	1
Improving the physical health of children and young people in South West London	6	1
Taking a partnership approach to maternity care	1	0
Reducing health inequalities for CYP	4	0

Table 5: Submitted and awarded applications submitted for Older people and the specific actions

Older people: Action	Submitted	Awarded
Working together to prevent older people having falls	3	1
Supporting the wellbeing of unpaid carers	4	1
Making South West London dementia friendly	3	0
Reducing and preventing social isolation	4	0

Summary by priority: Prevention, Mental wellbeing and Cross cutting themes

Table 6: Submitted and awarded applications submitted for Prevention and the specific actions

Prevention: Action	Submitted	Awarded
Developing a whole-system approach to healthy weight and reducing obesity	2	0
Developing personalised self-care for people with LTCs	18	1
Maximising the ability of the voluntary and community sector to support people to lead healthier lifestyles	11	1

Table 7: Submitted and awarded applications submitted for Mental wellbeing and the specific actions

Mental wellbeing: Action	Submitted	Awarded
Enabling healthy environments that increase mental well-being	5	0
Improving mental health literacy and reduce stigma	4	0
Improving the mental well-being of children and young people (CYP)	21	1

Table 8: Submitted and awarded applications submitted for Cross cutting themes and the specific actions

Cross cutting themes: Action	Submitted	Awarded
Championing equality, diversity, and inclusion	9	2
Championing the green agenda	1	1
Elevating the patient, carer and community voice	4	1

Grand total	Submitted	Awarded
	174	23

Summary by priority

During the information events we described the high level criteria for the applications, encouraging South West London wide applications. Figure 1 below demonstrates that the majority of applications received were South West London wide.

Figure 2 illustrates the percentage of applications awarded by the priority area confirming the distribution of awarded schemes is in line with the funding envelopes specified.

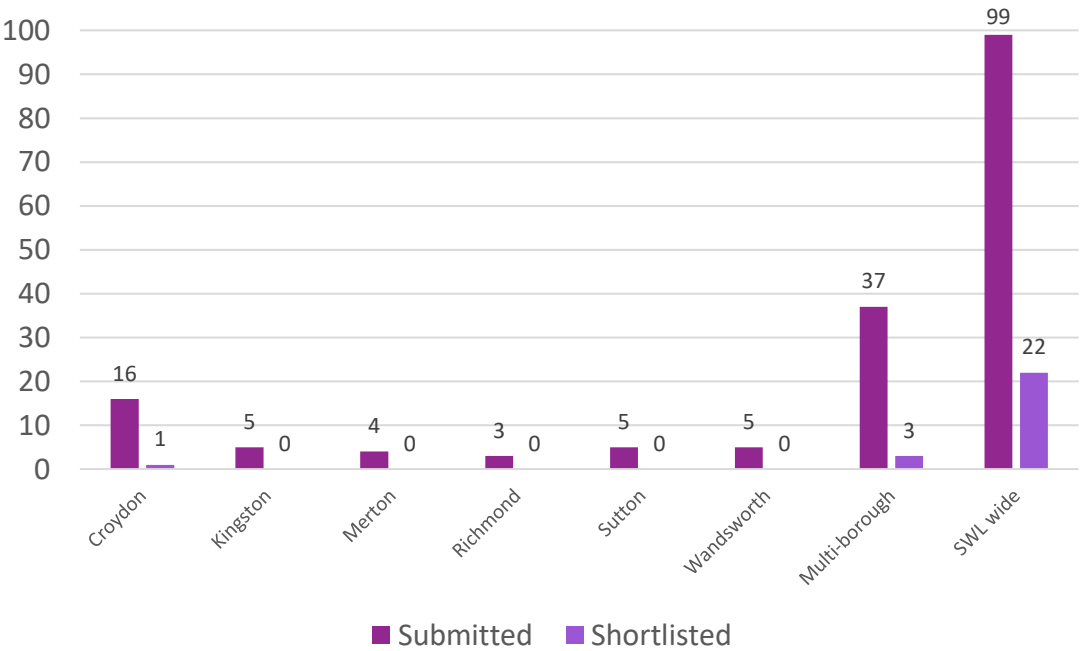


Figure 1: The distribution of applications submitted by geography

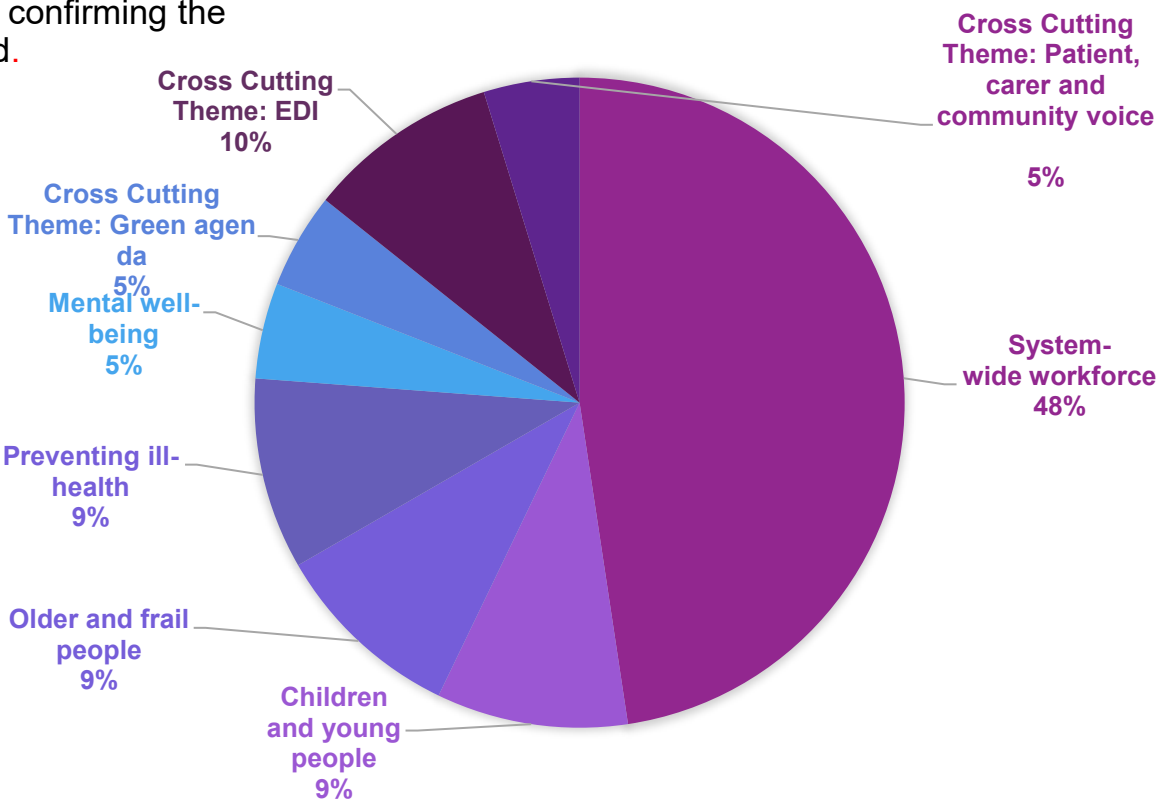


Figure 2: Proportion of awarded applications by priority

All successful schemes summaries

Scheme descriptions (1/2)

ICP Priority	Scheme Title	Scheme Lead	Scheme Description	Scheme coverage
CYP	BRITE Box (Building Resilience in Today's Environment) Weekly Meal Kit	Nick Dawson, Voices of Hope	<p>BRITE Box is a weekly meal kit with all required ingredients and an easy to follow recipe guide provided to enable a family to prepare and eat a balanced meal together.</p> <p>The boxes are provided to families identified by schools/LAs as being at risk of food insecurity or experiencing health inequalities. BRITE Box provides a "no-cost" nutritious meal each week and by providing a hands on, fun opportunity to engage with cooking from scratch each week, it builds cooking skills, confidence and healthy eating habits from an early age, creating lasting behaviour change and positively impacting both physical and mental health.</p>	Scaling up from Kingston and Richmond to Wandsworth and Croydon
CYP	South West London ICB and Local Authority Complex Children and Young People Project	Jonathon Williams London Borough of Sutton on behalf of SWL CYP	<p>The ambition of this scheme is to find cost effective solutions to improve outcomes for children with complex needs. It will start with a review that explores how needs and risk are managed across SWL for children with the most complex of needs, which refers to issues around mental health, trauma, EHCP, SEND and autism.</p> <p>The findings from the review will inform decisions about how to best utilise spend for high cost placements and possible alternatives across the SWL region to improve outcomes for children with complex need. The recommendations will be implemented through the rollout of the project</p>	South West London wide
Prevention	Scale Up of Universal Care Planning in Care Homes	Viccie Nelson, SWL ICB (Ageing Well)	This scheme aims to engage with care homes to encourage and support them to set up access to the Universal Care Plans (UCP) alongside providing training to write UCPs for eligible residents. This will allow access to care homes, London Ambulance Service (LAS) and other care providers to help share people's wishes, provide individual care information and ensure all healthcare professionals understand the resident's appropriate escalations in emergencies.	South West London wide
Prevention	Pentathlon	Grace Neal, SWL ICP, Prevention Programme	Pentathlon is an inclusive general health and wellbeing programme, co-produced with community leaders and other community assets in South West London. The programme consists of 5 sessions covering different aspects of health and wellbeing including nutrition, exercise and emotional wellbeing which can be delivered independently or as a set. The sessions are designed to provide communities with vital information about maintaining and protecting overall health and wellbeing, as well as improving health literacy. Sessions are delivered by peers in an easy-to-understand format within a safe and trusted environment. The content of the sessions has been produced by a specialist dietitian.	South West London wide

Scheme descriptions (2/2)

ICP Priority	Scheme Title	Scheme Lead	Scheme Description	Scheme coverage
Mental Wellbeing	Little Hands (Domestic Abuse Play Therapy) Service	Stephen Loizou, Jigsaw4u	Jigsaw4u's proposed Little Hands service will provide Play Therapy packages for traumatised children aged 5 to 9 years old who have experienced Domestic Abuse (DA) across SW London. By extension, parents will also receive therapeutic support. Interventions will be delivered by Play Therapists qualified to MA level or equivalent, with supplementary training in approaches such as Theraplay and Dyadic Developmental Psychotherapy. Children will be supported to safely explore emotions, process unresolved trauma, learn new coping mechanisms and redirect inappropriate behaviours..	South West London wide
Older People	Dance to Health	Jodie Stus, Aesop Arts and Society Ltd	Dance to Health (D2H) uses creative dance to address the major health challenge of older people's falls. Postural Stability Instruction (PSI)-qualified Dance Artists (DAs) will embed PSI into creative dance. Their on-going coaching ensures high artistic standards plus PSI fidelity. All DAs are experienced in working with older adults/vulnerable adults in the community. Each weekly 2-hour D2H face-to-face session includes half-hour's social time; ensuring participants improve physically/mentally; reduce likelihood of falling; and feel less socially isolated/more confident/independent.	Croydon & Wandsworth
Older People	Unpaid Carers Training	Tessa Shields, Integrated Care Support Services	This scheme will deliver a training programme to support carers in SWL, including young carers to enhance skills and confidence in caring for others and themselves. 13 courses for carers, delivered at Place level with Carer Centres, mixture of face-to-face and online.	South West London wide

Scheme descriptions: Workforce (1/3)

All workforce schemes are South West London wide.

Scheme Title	Scheme Lead	Scheme Description
Developing the Occupational Therapy Workforce for the Future: Strengthening the Trusted Assessor Pathway	Rosemary Elston-Smith, London Borough of Sutton, Royal Borough of Kingston and London Borough of Croydon (on behalf of SWL LA's)	<p>This scheme aims to develop a Trusted Assessor Framework across SWL for occupational therapy. The scheme will increase collaboration with accredited or in house training providers and universities (Roehampton, Kingston and LSBU) to promote and enable the training to meet the needs of the workforce.</p> <p>In addition to developing standard operating procedures for equipment the scheme will also guide, support and mentor trusted assessors to maintain and develop their skills through regular forums and direct support.</p>
Practice Education for Nursing Associate Apprentices	Joanna Lysenko, Royal Marsden NHS Trust	<p>The purpose of this scheme is to develop a pipeline of cancer-experienced Nurse Associates through an apprenticeship funded academic pathway. The scheme involves offering 18 Healthcare Support Workers the opportunity to train to become nurse associates in partnership with Roehampton University. It is vital to all students to receive a high standard of support and education throughout their placement and yet unlike direct entry students there is no additional capacity in the workplace to support clinical apprentices. The funding is for a 0.5WTE Practice Educator to deliver education, supervision and career advice to the cohort of Healthcare Support Workers.</p>
Community Upskilling & Job Readiness	Melanie Ashdown Integrated Care Support Services	<p>This scheme aims to create a pathway into work for those from vulnerable backgrounds like women, young carers, people who have been in care, facilitating entry into the workforce. This will be achieved through several Health & Social Care Community Sessions held in each Place via online sessions, covering: SWL health & social care landscape, where to apply, volunteer and work experience opportunities. The scheme will also deliver a range of training including; Communication, Time Management, Medical Terminology, Unconscious Bias, Health Literacy, Mental Health First Aid, Care Certificate Awareness, Interview Preparation, Team working.</p> <p>The anticipated impact of the scheme is to increase upskilling and job readiness, enhance recruitment and improve retention</p>
Supporting Care Leavers to obtain employment into local Health and Social Care Roles	Julie Hesketh, SWL Training Hub	<p>This scheme aims to support care leavers by providing a 'targeted personalised programme' to help gain employment or training in local health and social care. Working with local partners across the Health and Social Care system we will ensure collaboration and promotion of the 'Care Leaver Covenant'. We will also engage with local care leavers benefitting and learning, from the lived experience of such individuals.</p>

Scheme descriptions: Workforce (2/3)

All workforce schemes are South West London wide.

Scheme Title	Scheme Lead	Scheme Description
South London Careers Hub - Health and Care Work Experience and Employer Encounters Programme	Rachel Bennett & Polly Persechino, SWL ICP Workforce Programme	This scheme aims to deliver work experiences in health and care for over 100 students across Croydon, Merton, Kingston, Richmond, Sutton, and Wandsworth. Building on our existing arrangement with 103 schools and colleges across SW London, supporting careers education, this programme will deliver a range of innovative and exciting employer encounters and raise awareness of the breadth of opportunity within health and care; promoting pathways into good local jobs. Working with the Acute Provider Collaborative and the Mayors Health and the Care Hub, we will broker real-world experience, develop resources for managers and deliver a series of high-profile events.
South West London ICP Centralised Apprenticeship Hub	Lorissa Page, SWL ICP Workforce Programme	<p>The proposed South West London ICP Centralised Apprenticeship Hub aims to strategically enhance and manage apprenticeships in health and social care. It will benefit employers, educators, the voluntary sector, and apprentices by improving apprenticeship pathways, sharing best practices, and efficiently utilising the apprenticeship levy.</p> <p>The hub will foster a supportive culture for apprenticeships, improve educational offerings, and establish a network of top-notch healthcare education providers. It will also trial rotational apprenticeship placements. Expected outcomes include a skilled workforce, efficient financial resource use, and a sustainable apprenticeship model extending beyond April 2025, aligning with the NHS Long Term Workforce Plan.</p>
Targeting difficult to recruit to roles in SW London	Lorissa Page, SWL ICP Workforce Programme	This scheme has identified registered and non-qualified nursing in the following areas as our greatest recruitment challenge in health and care in South West London. This includes General Practice Nurses, Care Home Nurses, Community Nurses (Band 5 and 6) and Health Care Support Workers. The scheme will agree and deliver actions to improve recruitment over the next year to include the provision of additional training and development, recruitment initiatives and a focus on gathering and learning from staff feedback as to why they leave. We will also investigate supporting our current Care Home nursing staff with overseas qualifications to practice in the UK. Expected outcomes are to improve the numbers of new nursing recruits in the areas identified.
Making it easier to find a job in SWL	Lorissa Page, SWL ICP Workforce Programme	<p>Making it easier to find a job in SWL schemes aims to;</p> <ul style="list-style-type: none"> • Provide a sustainable and personalised outreach approach that engages and educates the local community with career opportunities in the NHS. • Design an innovative application process that is modernised and suits the needs of the community and modern society. • Develop a project-based approach to work experience for all age groups. • Design an innovative application process that is modernised and suits the needs of the community and modern society.

Scheme 3 descriptions: Workforce (3/3)

All workforce schemes are South West London wide.

Scheme Title	Scheme Lead	Scheme Description
I-CAN: Initiating and supporting Care leavers into Apprenticeships in Nursing	Richard Keogh, University of Roehampton	Led by the University of Roehampton (UoR) in partnership with local partners, I-CAN will support vulnerable groups into high-priority Nursing Associate roles within the SWL NHS and other progression pathways that support long-term workforce development. Care Leavers (CLs) are amongst the least likely young people to aspire and attain jobs which require higher-level skills, owing to socio-economic pressures and lower levels of academic attainment. I-CAN will address these challenges, recruiting and supporting the transition of 45 CLs into Nursing Associate roles, paying CLs to learn and supporting them through a unique functional and clinical skills study programme.
Supported Work Placements in Social Care	Sheryl Brand & Polly Persechino, SWL ICP Workforce Programme	This programme will support 50 unemployed south Londoners into jobs in care. This will be achieved by: <ul style="list-style-type: none"> • Delivery of skills and employability support (e.g. care certificate, communication for care) • Brokering 50 paid work experience placements • Identifying jobs • Application and interview support • On-going in-work coaching. The programme will have a specific focus on reaching and supporting communities that are underrepresented in the care sector, improve pathways into good work and provide the skills and wraparound support to improve individuals' health, well-being, and economic resilience. It will provide at least 50 work experience placements, 50% of the year one priority target
Local jobs for local people	Lisa Childs, SWL Recruitment Hub	To enable and encourage our local population in SWL into careers in the partner organisations of the SWL Recruitment Hub. We will <ul style="list-style-type: none"> • Implement an applicant tracking system that is intuitive, offers an enhanced candidate experience, with built in Automated Intelligence that will help people identify roles that match their skills. • Appoint a Community Recruitment Engagement Lead to manage and run events, to become 'one stop shop' for recruitment in the NHS for our community. The impact of the scheme is we will ensure a talent pipeline for our future workforce needs putting the local population at the heart of this
SWL Wellbeing Hub	Lorissa Page, SWL ICP Workforce Programme	Our new health and wellbeing offers will promote a workplace that values and supports our staff members. Our main focus areas will be: <p>Mental health - this scheme provides a number of access points for intervention across the mental health spectrum, so we can support staff members more effectively</p> <p>Women's health - the main focus of this scheme will be to address a number of women's health issues; musculoskeletal problems, menopause, gynaecological problems and mental health. This will be done by providing practical and educational solutions for staff as well as institutional change to improve absenteeism, retention and staff morale in SWL.</p> <p>Men's Health - this scheme will tackle key issues such as mental health, suicide prevention, prostate health, musculoskeletal problems, and obesity. There will be a key focus on early intervention, encouraging men to seek help before conditions become severe, promoting proactive well-being strategies</p>

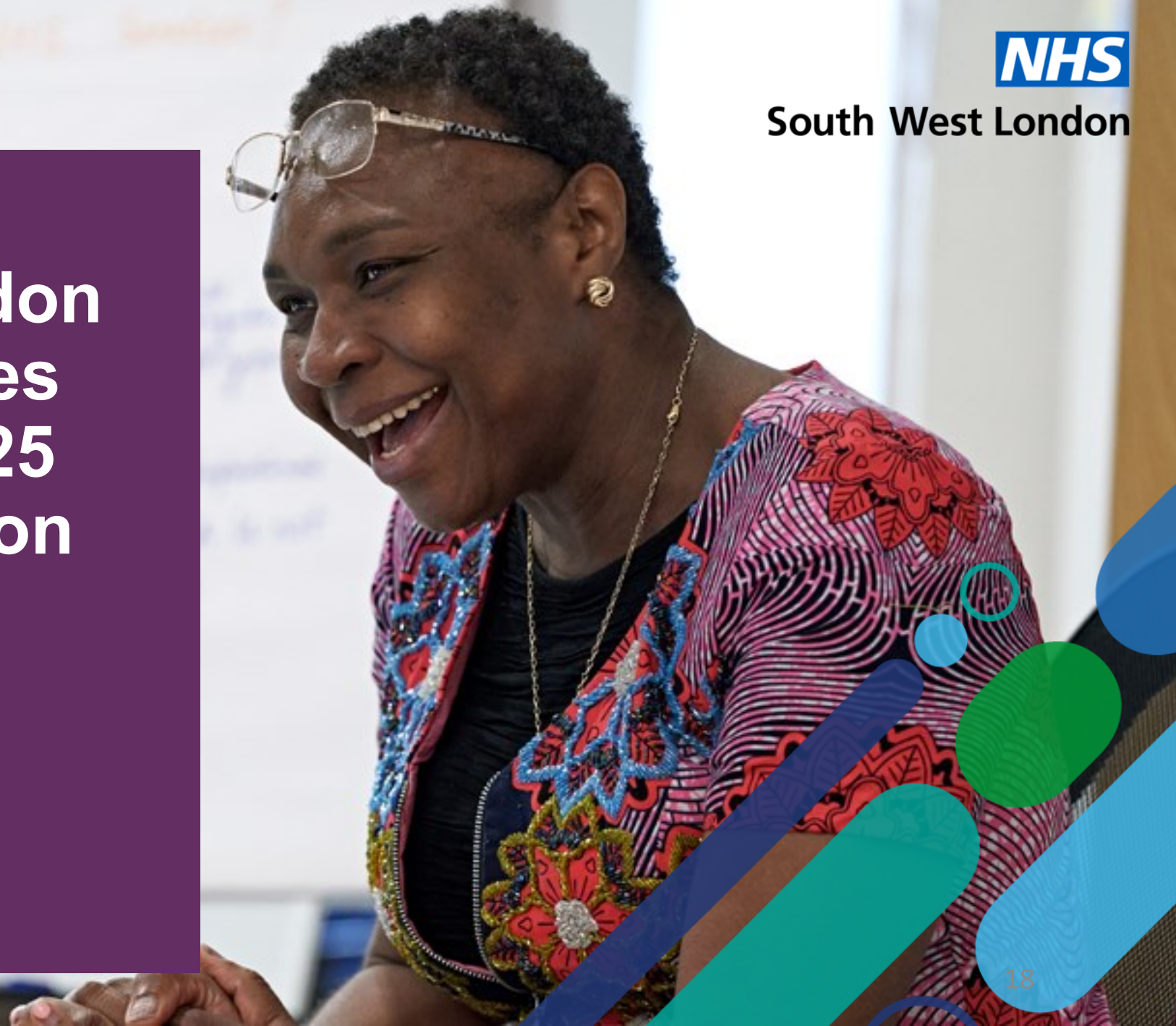
Scheme descriptions: Cross Cutting Themes

ICP Priority	Scheme Title	Scheme Lead	Scheme Description	Scheme coverage
Championing equality, diversity, and inclusion	Co-Produced Equity Conversations	Joy Goddard, The Jen Group	The 'Maternity Equity Conversations' scheme is a cultural competency training product which was co-produced and delivered by women with lived and/or professional experience of racial and/or socioeconomic inequity in maternity and neonatal services. The product will provide staff with a safe and supportive space to explore issues of equity and inequity and develop a plan to contribute to positive change.	South West London wide
Championing equality, diversity, and inclusion	Improving delivery of the Accessible Information Standard in GP practices in South West London	Alyssa Chase-Vilchez HealthWatch (SWL)	This scheme will speak to people and their carers to understand how well GP practices are meeting their communication and information needs. The Accessible Information Standard aims to meet the information and/or communication needs of people who have disabilities or sensory loss that affects their ability to communicate or understand information. The scheme will also work with GP practices to understand the barriers and facilitators to delivering the Standard. They will bring patients, carers, and GP practice representatives together to identify improvement strategies.	South West London wide
Championing the green agenda	SWL Upcycled Bikes for NHS Staff	Dave Woodruff, St George's Hospital (on behalf of NHS in SWL)	This scheme aims to provide upcycled bikes free for all NHS staff in South West London, and support them to adopt cycling as a mode of transport for commuting and for pleasure. St George's currently has a very successful scheme where members of the public or staff donate unwanted bikes, Richard Huie (a.k.a. Dr Bike) makes the bikes roadworthy again using a small amount of charity money (for replacement parts), and the bikes are then gifted to employees, with a lock and some high visibility clothing.	South West London wide
Elevating the patient, carer and community voice	Listening Project- Neurodevelopmental Conditions for Black People in Croydon	Andrew Brown, Croydon BME Forum	This scheme aims to address and prioritise key issues within the Black community around neurodevelopmental conditions. The scheme will conduct a comprehensive assessment of the neurodevelopmental needs within the Black communities in Croydon. It will also foster partnerships with local organisations, experts, and community leaders to gather insights and perspectives. It will also develop recommendations for culturally sensitive interventions and support mechanisms to address the identified needs. The scheme is delivered in partnership with South London and the Maudsley NHS Trust.	Croydon

South West London Health Inequalities (HI) Fund FY 23-25 Projects Allocation

Awards Summary

March 2024



Health inequalities fund summary

South West London (SWL) has been awarded a further £4.3 million funding in the financial year 2023/24 from the national team at NHS England to focus on reducing health inequalities.

The Investment Fund approach was approved by the SWL Integrated Care Partnership (ICP) Board in July 2023 and it was agreed that each Place would identify the projects they wanted to continue to fund at a Place-level and also to nominate a project that could be scaled up to SWL level.

Two different but similar application and award processes were followed for the Health Inequalities Fund: the first for existing schemes previously in place from 2022/23 and the second for new schemes.

The Health Inequalities fund for 2023-25 is distributed between these existing and new schemes:

- 75% for existing schemes
- 25% for new schemes

We want to build on and scale up the work that has been delivered at system, Place and neighbourhood level, to continue to reduce health inequalities especially at a time where more people continue to be impacted by the current cost of living crisis.

This slide deck provides details of the awarding process, the volumes of applications throughout the stages of the process and detailed analysis of the schemes by theme and geography.

We have awarded a total of £3,655,747 across both new and existing projects for delivery between January 2024 and March 2025.



Existing schemes: Approach and Outcome

Based on Health Inequalities schemes previously approved in 2022/23 across the six SWL boroughs, each Place was requested to submit applications for schemes they would like to continue in 2023-25. 28 schemes were submitted across the six boroughs. The SWL panel met on 30 October 2023 to review all 28 applications submitted by Place leads to ensure consistent approach to scoring.

All applications underwent financial review and further queries were raised and resolved.

Of the 28 applications submitted:

- 20 schemes were approved to be delivered at Place level totalling £1,244,964.
- 3 projects approved to be delivered at across SWL totalling £1,346,004.
- 1 provider went into administration during the review process, so application was declined.
- 4 projects were not approved as they have not started delivery since initial approval in 2022/23.

Four of the projects were scaled up to be delivered across SWL (SPEAR, Brazil model, social prescribing for children and young people).

Figure 3 illustrates the proportion of existing schemes awarded across a range of key priorities.

Existing projects are funded up to March 2025 with funding dependent on the progress of the projects and regular reporting to the Health Inequalities Fund Delivery Group. Only projects that have been delivering the agreed outcomes have been funded.

Projects will receive money for 2024/25 (dependent on project progress via regular reporting to the health inequalities fund delivery group).

In total £2,590,968 of funding has been awarded for existing schemes.

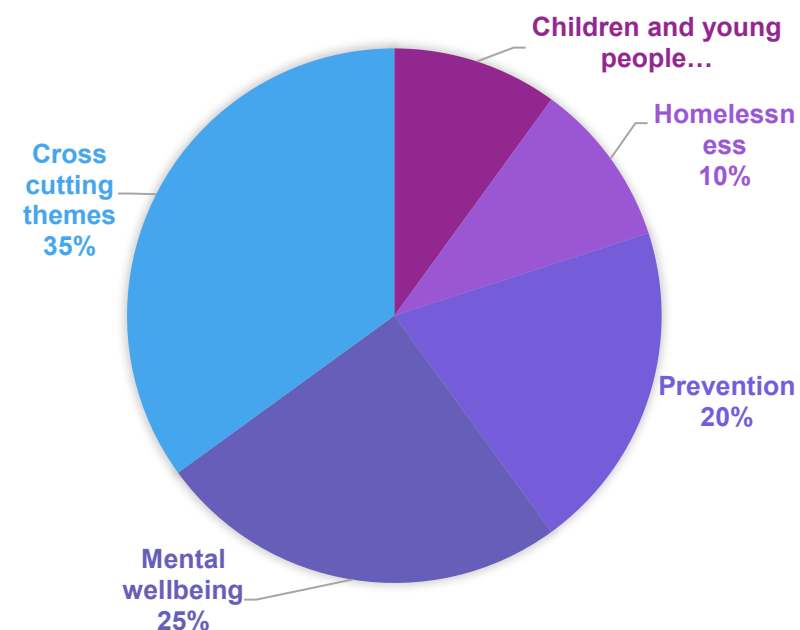


Figure 3: Proportion of existing schemes by priority



New schemes: Approach

The Integrated Care Partnership Health Inequalities Fund 2023-25 opened on 2 October for 6 weeks.

The reviewing process included the following steps:

- Submitted bids were reviewed by the borough of proposed delivery, each borough Place lead convened a panel of moderators to review the assigned bids, with multi-borough bids being reviewed by all relevant boroughs.
- Reviewer guidance was shared in advance, ensuring the scoring of the bids was a fair process and there was clear alignment with the health inequalities in the local population.
- Bids were assessed and given either awarded or rejected status.
- The final score for each bid considered the following:
 - Purpose of the project
 - Alignment of ICP priorities
 - Evidence to support programme delivery and success
 - Evidence of engagement or co-production with the targeted audience
 - Clearly defined outcomes, impact and measures
 - Clearly defined evaluation and sustainability plans
- In addition, reviewing teams were asked to document any clarification questions that needed to be answered to support a decision being made.
- Due diligence was performed, and all bidders were asked to respond to queries.

Financial review and panel review:

- The suggested bids were reviewed by the SWL ICS CFO.
- Place executives met on 12 December 2023 to review the bids approved by place leads, to review the due diligence and make their final decision.

Awarding summary – New schemes

The review process for the Health Inequalities Fund concluded on 15 December 2023 after processing 79 bids totalling £7,780,366 . Following the review by Place leads, 18 bids were provisionally awarded by Place leads. All 18 bids were accepted by the panel, with one bid being approved to also be delivered in a neighbouring borough, with the **final 19 bids awarded totalling £1,064,779**

Table 4 below summarises the distribution of submitted and awarded bids by geography and Figure 4 illustrates the proportion of existing schemes awarded across a range of key priorities.

Geography	Submitted		Awarded	
	Number	Value (£)	Number	Value (£)
Croydon	17	£1,302,851	4	£311,782
Kingston	7	£691,197	3	£100,838
Merton	10	£562,227	4	£113,498
Richmond	3	£64,080	2	£30,848
Sutton	8	£612,717	4	£142,343
Wandsworth	10	£1,157,308	2	£365,470
Multi-borough	24	£3,389,986	0	£0
	79	£7,780,366	19	£1,064,779

Table 9: Bids by geography throughout the stages of the awarding process.

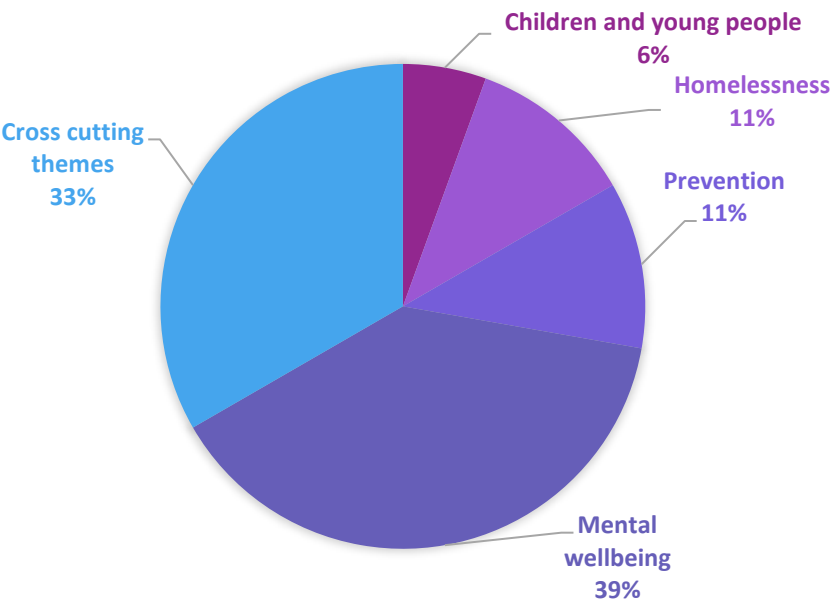


Figure 4: Proportion of newly awarded schemes by priority

Summary by priority – New, existing and SWL-wide schemes

The table below shows the breakdown of submitted and awarded applications by focus area and the specific actions.

Focus Area	Actions	Existing Schemes	New Schemes	SWL - Wide
CYP	<ol style="list-style-type: none"> 1. Support the health improvement, education and empowerment of young people 2. Emotional support to young people 3. Reducing health inequalities for CYP 	<ol style="list-style-type: none"> 1. LBM Social Prescribing 2. Battersea Alliance Project 	<ol style="list-style-type: none"> 1. homestart Sutton 	
Homelessness	<ol style="list-style-type: none"> 1. Outreach Clinics 2. Information and support 	<ol style="list-style-type: none"> 3. Sutton Homelessness Project 4. Thinking works 	<ol style="list-style-type: none"> 2. SPEAR in collaboration with churches in Kingston 3. The Reader 	<ol style="list-style-type: none"> 1. SPEAR
Prevention	<ol style="list-style-type: none"> 1. Empower people with Long Term Conditions 2. Promote awareness 3. Self-Management and Self Care 4. Provide Information and Education 	<ol style="list-style-type: none"> 5. Expert Patient Programme - 6. Healthsmart 7. KVA social prescribing 8. Live Karma Yoga 	<ol style="list-style-type: none"> 4. Volunteer Centre Sutton 5. The Mulberry Centre 	<ol style="list-style-type: none"> 2. Connectors
Mental Wellbeing	<ol style="list-style-type: none"> 1. Emotional and Wellbeing support to carers 2. Advice, Advocacy and Access Support 3. Increase Carer's Identification 4. Provide Information, coaching and support to Housebound patients 5. Targeted Mindfulness and Exercise sessions to build confidence 6. Non-judgemental support 7. Create mental Health First Aider 8. Reduce Social Isolation 	<ol style="list-style-type: none"> 9. Kingston Carers' Network 10. Crossroads Care 11. The Cambrian Community Centre 12. Weekend Warmth and Support 13. Share Community 	<ol style="list-style-type: none"> 6. Club Soda 7. Culturally Appropriate Peer Support and Advocacy (CAPSA) Croydon 8. SIG Penrose 9. Wimbledon Guild 10. Merton Mencap 11. Attic Theatre Company (across 2 Boroughs) 12. Estate Art 	
Cros Cutting Themes	<ol style="list-style-type: none"> 1. Improve awareness of services 2. Recruit Community Champions 3. Community Development Activities 4. Health Promotion in deprived areas 5. Community Participatory Research 6. Emotional and practical support for people with a visual impairment 7. Promote and Improve Health Care response to Gender based violence 8. Social welfare legal advice and information 	<ol style="list-style-type: none"> 14. Eastern European Community Engagement 15. Befriending Service for Isolated People with Mental Health Needs 16. Believe in yourself 17. Health in your hands 18. Community Action Sutton 19. BlindAid 20. Elays Network 	<ol style="list-style-type: none"> 13. Croydon IRIS 14. East Merton Primary Care Network 15. The Wandsworth Care Alliance 16. Place at my Table 17. Age Concern 18. Kingston Centre for Independent Living (KCIL) 	<ol style="list-style-type: none"> 3. Brazil Model

All successful existing schemes summaries

Existing scheme descriptions (1/4)

Place	Organisation	Sector	Title of Projects
Croydon	Asian Resource Centre Croydon	VCSE	Expert Patient Programme - To empower people with Long Term Conditions and promote awareness and create a more user-led self-management to allow people with long-term diseases to have access to opportunities to develop the confidence, knowledge and skills to manage their conditions better.
Croydon	Healthsmart - Age UK Croydon	VCSE	Healthsmart will deliver 6 x weekly health hubs to run in ICN localities in Croydon. They are designed around promoting proactive & preventative behaviours and increasing knowledge/awareness around modifiable risk factors for disease.
Kingston	Kingston Voluntary Action	VCSE	Reducing health inequalities in Kingston through community-run social prescribing activities . The aim is to reduce health inequalities through information and education, joining up with other services in advice, volunteering opportunities, classes and empowering individuals to take charge of their own health needs, preventing long term or chronic health issues.
Kingston	Kingston Carers' Network	VCSE	Carer Support throughout the Royal Borough of Kingston. This specific funding goal is to offer a full range of emotional and wellbeing support, alongside benefits advice and advocacy, carers' rights and statutory carers' assessments. This project would enable KCN to reach into the community and increase carer identification.
Richmond	Ruils-Independent Living	VCSE	Health in Your Hands (Community Connectors)This project will build on the local skills, knowledge and experience that Ruils already holds in relation to targeted health promotion work within the most deprived areas of the borough (Hampton North and Whitton). This funding will enable us to develop existing projects further, outreaching to the most isolated residents, holding Community Conversations and bringing health to their doorsteps.
Richmond	Crossroads Care Richmond and Kingston upon Thames	VCSE	Health Inequalities Programme for carers and the people they care for, of all ages and disability, including behavioural, emotional and/or medical needs — those most vulnerable, at-risk, and socially isolated.
Richmond	The Cambrian Community Centre	VCSE	Developing the Exercise Referral Service and Community Gym capacity at the Cambrian Centre Community Gym. It addresses health inequalities by providing an affordable and accessible Community Gym in this area of significant disadvantage. The Gym also addresses health inequalities through its Health Referral Scheme. It receives referrals from a range of health professionals in the London Borough of Richmond upon Thames

Existing scheme descriptions (2/4)

Place	Organisation	Sector	Title of Projects
Merton	The Polish Families Association	VCSE	<p>Eastern European Community engagement Targeted engagement work to improve awareness and health access for East Merton's Eastern European community. Deliverables include:</p> <ul style="list-style-type: none"> Identifying and recruit community Health Champions and assets within Polish/Eastern European community to champion health and wellbeing Creating a shared space for the Polish/Eastern European community to develop a greater understanding of local health and care services. Continuing community development activities that facilitate community dialogue with the health services and to provide a channel for statutory services to hear, understand and respond adequately to the health needs of Polish/Eastern European communities.
Merton	London Borough of Merton - Public health	Local authority	<p>Expansion of CYP Social Prescribing: To scale-up the CYP social prescribing pilot into a second PCN address this unmet need in the borough and prevent further exacerbation and escalation of these health issues. The aim is to support the health improvement, education and empowerment of young people in Merton to help them now and in the future to lead happier and healthier lives with reduced need for clinical services. It does this by referring young people aged 13-18 years and up to the age of 25 years with additional needs to seek support and connect with groups and activities in Merton to help them with their mental health and/or living with obesity.</p>
Merton	Age UK & Wimbledon Guild	VCSE	<p>Befriending service for isolated people with mental health needs: Aimed at people who are housebound due to anxiety or depression project will providing information, coaching and supporting people to be more physically active, join services, groups and activities in the community</p>
Merton	Ethnic Minority Centre Mitcham	VCSE	<p>Wellbeing course: Believe in Yourself: Workshops on Health Issues by Health Professionals and Outdoors Walks with exercises to improve Health Inequalities and build confidence through Mindfulness session, Yoga, Zumba class</p>
Sutton	Community Action Sutton	VCSE	<p>Community Participatory Research This project fills a gap by providing capacity to do intensive community development work, focused in four estates identified as in greatest need (Benhill, Shanklin, Roundshaw and St Helier). To build trust in marginalised communities and shape ideas into deliverable projects requires time and expertise. The scale of health inequalities and the commonly cited barriers to engagement mean that tapping into the desire of communities to help themselves is vital. The localised asset-based approach means that local support is increased, but also that communities are enabled to determine how investment is used.</p>
Sutton	Sutton PCNs CiC - Sutton GP Services	NHS PCN	<p>Homeless Project - Integrated Health & Care for Sutton's Most Socially Excluded Communities (Core 20 PLUS 5) . Outreach Clinics</p> <p>This project focuses Core 20 PLUS 5 communities primarily those considered homeless including rough sleepers, those in emergency and temporary accommodation, residents of hostels and refuges and sofa surfers. The service provides primary care services (GP, HCA, Social Prescriber, and Mental Health Workers) to homeless patients in Sutton who are often face barriers accessing mainstream services.</p>
Sutton	Sutton Mental Health Foundation	VCSE	<p>Weekend Warmth and Support (now known as the In Your Corner Sunday Service): This specific funding goal is to provide Weekend Warmth and Support (now known as the In Your Corner Sunday Service). In Your Corner will offer a warm, safe space with an affordable home cooked meal alongside non-clinical, non-judgemental support for those experiencing loneliness and isolation, low mood, and for whom Sundays are triggering. The service will run on the 2nd, 4th and 5th Sundays of the month, from the end of October to the end of March (the darkest, coldest and arguably most difficult months of the year, both for mental health and cost of living).</p>

Existing scheme descriptions (3/4)

Place	Organisation	Sector	Title of Projects
Wandsworth	Wandsworth Council, Thinking Works	Private company	Warm homes this winter - Core 20 Expansion - through the delivery by a Voluntary Community and Social Enterprise to address the wider determinant of health – <ol style="list-style-type: none"> 1. Expand engagement through Thinking Works links with the Food Banks and Citizens Advice Bureau to address individuals in crisis 2. Expand reach in CORE20 areas through the community health / vaccine bus 3. Find community-based outreach opportunities to expand and build partnerships to increase engagement with at-risk groups, especially with low-income families and people with long-term limiting illness
Wandsworth	Battersea Alliance (Cauis), WCEN, WCAB, WTH, LA	VCSE	Battersea's voluntary sector to address the inequalities and pressures that affect BAME young people's mental health To deliver drop-in counselling services, providing advice and emotional, support, group therapeutic activity sessions for young people building emotional literacy, peer mentoring training and support groups
Wandsworth	Live Karma Yoga - LKY New Address (2024): 30 Petworth Street SW114QW	Private company	Live Karma Yoga (LKY) -Wellness Warriors: Wellness practice through classes and outreach programme To provide sessions and opportunities that are accessible to all, embracing diversity and celebrating difference through utilising wellness practices and uniting people from all walks of Life, LKY can support communities in achieving happier and healthier Lives. The daily classes and Outreach programmes that run involve working with those who face barriers to participation; tackling challenges around ability, environment, health or background. LKY is to expand their services to reach more people, as well as increase our current offering to the groups they support. (6 Months)
Wandsworth	Share Community	VCSE	Health and Wellbeing for Adults with Learning Disabilities and Autism: This project was aimed at delivering dedicated wellbeing support across our sites to help our students to take more control over their own health and wellbeing, and to invest in new impact resource to understand how our programmes affect their wellbeing
Wandsworth	BlindAid	VCSE	Sight Support service in Wandsworth Providing emotional and practical support within the homes of our beneficiaries; who are individuals living with a visual impairment
Wandsworth	Elays Network	VCSE	Expansion of Elays services by increasing and development of new programmes, trading activities Create Mental Health first aiders, introduce awareness, advice and access support, raise awareness for healthy behaviours and lifestyle changes. This specific funding is to expand the current project to new areas of Roehampton & Southfields with significant Somali population .Training a further 15 Community Health Champions in Mental Health and Core20Plus5 health matters. Run 24 Community placed based sessions facilitated by the Health Champions in Wandsworth (12), Roehampton (6) and Southfields (6). Arrange 9 Health Clinics (one in each area every six months) with partner organisations bringing in Somali GPs.

Existing scheme descriptions (3/4)

Place	Organisation	Sector	Title of Projects
Wandsworth	Wandsworth Council, Thinking Works	Private company	<p>Warm homes this winter - Core 20 Expansion - through the delivery by a Voluntary Community and Social Enterprise to address the wider determinant of health –</p> <ol style="list-style-type: none"> 1. Expand engagement through Thinking Works links with the Food Banks and Citizens Advice Bureau to address individuals in crisis 2. Expand reach in CORE20 areas through the community health / vaccine bus 3. Find community-based outreach opportunities to expand and build partnerships to increase engagement with at-risk groups, especially with low-income families and people with long-term limiting illness
Wandsworth	Battersea Alliance (Caus), WCEN, WCAB, WTH, LA	VCSE	<p>Battersea's voluntary sector to address the inequalities and pressures that affect BAME young people's mental health</p> <p>To deliver drop-in counselling services, providing advice and emotional, support, group therapeutic activity sessions for young people building emotional literacy, peer mentoring training and support groups</p>
Wandsworth	Live Karma Yoga - LKY New Address (2024): 30 Petworth Street SW114QW	Private company	<p>Live Karma Yoga (LKY) -Wellness Warriors: Wellness practice through classes and outreach programme</p> <p>To provide sessions and opportunities that are accessible to all, embracing diversity and celebrating difference through utilising wellness practices and uniting people from all walks of Life, LKY can support communities in achieving happier and healthier Lives.</p> <p>The daily classes and Outreach programmes that run involve working with those who face barriers to participation; tackling challenges around ability, environment, health or background. LKY is to expand their services to reach more people, as well as increase our current offering to the groups they support. (6 Months)</p>
Wandsworth	Share Community	VCSE	<p>Health and Wellbeing for Adults with Learning Disabilities and Autism:</p> <p>This project was aimed at delivering dedicated wellbeing support across our sites to help our students to take more control over their own health and wellbeing, and to invest in new impact resource to understand how our programmes affect their wellbeing</p>
Wandsworth	BlindAid	VCSE	<p>Sight Support service in Wandsworth</p> <p>Providing emotional and practical support within the homes of our beneficiaries; who are individuals living with a visual impairment</p>
Wandsworth	Elays Network	VCSE	<p>Expansion of Elays services by increasing and development of new programmes, trading activities</p> <p>Create Mental Health first aiders, introduce awareness, advice and access support, raise awareness for healthy behaviours and lifestyle changes.</p> <p>This specific funding is to expand the current project to new areas of Roehampton & Southfields with significant Somali population .Training a further 15 Community Health Champions in Mental Health and Core20Plus5 health matters. Run 24 Community placed based sessions facilitated by the Health Champions in Wandsworth (12), Roehampton (6) and Southfields (6). Arrange 9 Health Clinics (one in each area every six months) with partner organisations bringing in Somali GPs.</p>

Existing scheme descriptions (4/4)

Place	Organisation	Sector	Title of Projects
South West London	SPEAR Housing Association Ltd	VCSE	SPEAR - Partnership health and wellbeing days across SWL – improving access to health and wellbeing services for people experiencing homelessness.
South West London	Connectors (8 VCSE across the 6 boroughs)	VCSEs	Core20PLUS Connectors programme is part of the support framework for progressing the goals of Core20PLUS5. The programme builds on many other community-based initiatives and experience from other volunteer roles which support health improvement and reducing inequalities. Key activities of VCSE delivery partner: Recruitment of existing and additional connectors; Peer support network for Connectors; People signposted to self-management or preventative programmes; Health and wellbeing events and Health and wellbeing activity programmes
South West London	Brazil Model (6 VCSE across 6 boroughs)	VCSEs	The project is based on the Brazilian Family Health Strategy which has successfully scaled a broad upstream horizontal model integrating population health into primary care through a community household approach. The systematic and integrated approach ensures that a new illness or problem in a household is identified proactively with improved access into the NHS, the Local Authority and the local community. The CHWWs are integrated into the local authority, Primary Care Network and local community networks and empower and engage communities in health-related activities by developing insights of local priorities, building trust, relationships and capacity within the local population.

Summaries of all successful new schemes



New scheme descriptions (1/3)

Place	Organisation	Sector	Brief description of Project
Croydon	Club Soda	VCSE	Club Soda in partnership with Croydon College - Leisure Link project goal is to improve the well-being and inclusivity of people with learning disabilities and autism. The project seeks to reduce social isolation, provide opportunities that will promote good mental and physical health, and empower individuals with learning disabilities to access arts, leisure, and sports opportunities.
Croydon	Bromley & Croydon WA (BCWA)	VCSE	Bromley & Croydon WA (BCWA)- Croydon IRIS Programme to promote and improve the health care response to gender-based violence
Croydon	South London and Maudsley NHS Foundation Trust Partner Organisation - Croydon BME Forum,	NHS	South London and Maudsley NHS Foundation Trust - Culturally Appropriate Peer Support and Advocacy (CAPSA) Croydon. The CAPSA service in Croydon is a carefully designed initiative prioritising cultural sensitivity and community involvement. The service is being collaboratively developed with Black community members, including individuals with lived experience, and in partnership with the Croydon Independent Advisory Group (IAG). It is specifically designed to address racial disparities in the current mental health systems for Black African and Caribbean communities.
Croydon	Social Interest Group (SIG) Partner Organisation - SIG Perose	VCSE	Social Interest Group - SIG Penrose Croydon Dual Diagnosis Support This specific funding goal is to support residents who have dual diagnoses and have the highest support needs and, therefore, are at an increased risk of homelessness, relapse, mental health crisis, and returning to the Criminal Justice System.
Merton	Wimbledon Guild Partner Organisation Morden Primary Care Network	VCSE	Wimbledon Guild - Psychoeducational exercise groups for frequent attenders with multiple long term conditions. Aim is to improve health behaviours and engagement with medical professionals.
Merton	Merton Mencap	VCSE	Merton Mencap - Learning disability carers service Merton Mencap will offer support to carers of adults with LDAs, preventing their situation from worsening and requiring costly statutory health and social care services.
Merton	East Merton Primary Care Network Wideway Medical Practice	PCN - General Practice	East Merton Primary Care Network - PHD Project across deprived areas in East Merton. East Merton Primary Care Network will develop a community health and wellbeing champion whose role is to support health and wellbeing of local community through a range of targeted health and wellbeing interventions.
Merton	Attic Theatre Company	VCSE	Attic Theatre Company - Many Voices Youth Refugee and Asylum Seeker Programme The Attic Theatre Company will run creative engagement projects across Merton and Sutton, with specialist knowledge of trauma informed practice and experience in delivering workshops to disadvantaged and non-English speaking participants as well as those who are facing social, economic and academic challenges.

New scheme descriptions (2/3)

Place	Organisation	Sector	Brief description of Project
Sutton	Sutton Borough Volunteer Bureau	VCSE	Volunteer Centre Sutton - Community Health Wellness Navigators Aim to tackle Health Inequality in Sutton with volunteers conducting outreach work to support people to manage their long-term conditions and promote self-care.
Sutton	Place at my table	VCSE	Place At My Table tackles barriers that marginalised groups encounter in accessing healthy lifestyles, health and care services, including the barriers of language, culture, isolation, mistrust, chronic health conditions, literacy, and digital exclusion.
Sutton	Attic Theatre Company - Partner Organisation	VCSE	Attic Theatre Company - Many Voices Youth Refugee and Asylum Seeker Programme The Attic Theatre Company will run creative engagement projects across Merton and Sutton, with specialist knowledge of trauma informed practice and experience in delivering workshops to disadvantaged and non-English speaking participants as well as those who are facing social, economic and academic challenges.
Sutton	Home-Start Sutton	VCSE	HomeStart Sutton - Community Volunteer Coordinator Home-Start Sutton will improve the ability to address health inequalities for families with children under 5, by minimising barriers (cultural, religious, gender and language) families who are currently not engaging in home services may face in accessing the service.
Wandsworth	Wandsworth Care Alliance	VCSE	The Wandsworth Care Alliance (WCA) will focus on addressing wider determinants in health to improve health equity and outcomes by increasing accessibility to social welfare legal advice and information services on a range of social and economic factors
Wandsworth	Estate Art Ltd	Private company	Estate Art works with local organisations to reduce health inequalities by addressing mental and physical health and wellbeing needs in Roehampton

New scheme descriptions (3/3)

Place	Organisation	Sector	Brief description of Project
Kingston	SPEAR Partner Organisation - Churches in Kingston	VCSE	SPEAR - Showering & laundry facilities for rough sleepers In collaboration with churches in Kingston, this project will provide weekly, drop-in showering and laundry facilities in the borough for rough sleepers. This will support a preventative approach to health and promote good health, wellbeing and self-care.
Kingston	Age Concern Kingston upon Thames t/a Staywell	VCSE	Age Concern - Staywell Home from Hospital Service A continuation of the service which provides a single point of contact for vulnerable people with small or nil packages of care, providing up to 6 hours of practical help at home per person.
Kingston	Kingston Centre for Independent Living (KCIL)	VCSE	Kingston Centre for Independent Living (KCIL) - Report an access issue Increase awareness of and the radius of the reporting service where members of the public can contact KCIL through the online reporting facility, or via phone, email or drop-in, to report an access issue in the Kingston Borough area, which is followed up by KCIL's dedicated Access officer.
Richmond	The Reader	VCSE	The Reader - Shared reading MH & wellbeing support for people experiencing homelessness. The service will bring people together to connect in a meaningful way through the power of its unique and innovative model, Shared Reading. At free, weekly Shared Reading groups, a story or poem is read aloud, and thoughts and experiences are shared in a safe, facilitated environment where everyone is valued, welcome and heard, providing mental health and wellbeing support for people experiencing homelessness.
Richmond	The Mulberry Centre - Partner Organisations - Age UK, Richmond CVS, Ham & Petersham SOS, Richmond Healthwatch, Multicultural Richmond, Twickenham Rotary Club, Ruils, Hampton Fund, Richmond Parish Land	VCSE	The Mulberry Centre - Community engagement - cancer information and support will offer support to those who have been impacted by cancer, including those with a diagnosis, their carers, families, friends and those bereaved, by offering practical ways of enhancing emotional, psychological, and physical well-being tailored to the needs of each individual.