

South West London Investment Fund

Integrated Care Partnership
Priorities Fund

Health Inequalities
Fund

Information session

02 October 2023



Welcome to the South West London Investment fund information session

What we will cover today:

- An introduction to the investment fund; the Health Inequalities Fund and the Integrated Care Partnership Priorities Fund
- The process for this year
- Voluntary sector and community enterprise (VCSE) engagement
- Healthwatch support
- Time for questions



Introduction to the South West London Investment Fund

Integrated Care Partnership Priorities Fund



The ICP Priorities Fund for 2023-25 will be targeted to support delivery of the Integrated Care Partnership's strategic plan and priorities. The fund is divided into

- ICP Workforce priority has an 80% allocation of funding.
- Remaining ICP priorities and cross cutting themes focussed (excluding HI) has an allocation of 20% of the funding.

The ICP Priorities Fund has a budget of £5 million across the two financial years until March 2025.



Health Inequalities Fund

The Health Inequalities Fund has been awarded by NHS England to tackle Health Inequalities across South West London.

The Health Inequalities fund for 2023-25 will be distributed with 75% of funding for existing schemes and 25% for new schemes.

Place-based partnerships will receive an allocation of the funding using a needs-based approach.

£4.3 million is available to South West London for 2023/24.



Integrated Care Partnership

Developing our ICP strategy

Jan



We published the discussion document for our shared priorities in January 2023.

May



On Wednesday 24 May 2023, we held an Action Workshop to identify the collective actions we need to prioritise as a system-wide partnership.

Sept



We have now developed our Integrated Care Partnership Strategy
A shared strategy for health and care – the NHS, local authorities, the voluntary and community sector and Healthwatch partners.

ICP cross-cutting themes

Elevating patient, carers,
and community voices

Equality, diversity, and
inclusion

Championing the green
agenda

Health
inequalities



Children and
young people



Prevention



ICP
Strategic
Priorities

Positive
mental
well-being



Older people



Workforce



The South West London
Integrated Care Partnership

strategic priorities

and cross- cutting themes

HEALTH INEQUALITIES



- Addressing the wider determinants of health and wellbeing
- Scaling up innovation to improve outcomes for people in our most deprived areas and our most vulnerable people
- Empowering our communities to improve their health and wellbeing

PREVENTION



- Developing a whole-system approach to healthy weight and reducing obesity
- Maximising the ability of the voluntary and community sector to support people to lead healthier lifestyles
- Developing personalised self-care for people with long-term conditions

OLDER PEOPLE



- Making South West London dementia friendly
- Reducing and preventing social isolation
- Working together to prevent older people having falls
- Supporting the wellbeing of unpaid carers

CHILDREN AND YOUNG PEOPLE



- Reducing health inequalities for CYP
- Improving the physical health of children and young people in South West London
- Taking a partnership approach to maternity care
- Working together to improve outcomes for children and young people with SEND

POSITIVE MENTAL WELL-BEING



- Improving the mental wellbeing children and young people (CYP)
- Enabling healthy environments that increase mental wellbeing
- Improving mental health literacy & reducing stigma
- Understanding complex needs

WORKFORCE



- Targeting difficult to recruit health and care roles
- Making South West London a great place to work
- Supporting local people into employment
- Designing our future workforce, including new or different roles

Partnership commitments to cross-cutting themes

Championing equality, diversity, and inclusion

- Improving equality, diversity and inclusion is a priority for all organisations across South West London and there is a tremendous amount of action being taken in each to address their individual priorities.
- Equality, diversity, and inclusion will be a 'golden thread' running through everything we do, and how we work together, so that we provide the very best services and care for all people living in South West London.

Championing the green agenda

- Make it easier for our partners to collaborate and share information and best practice, so that we learn from each other and move towards and championing our common Net Zero goals.
- Work collectively to reduce the impact of climate change on the health of our population by raising awareness and supporting vulnerable groups and communities.
- Change the way in which we do things including the promotion of sustainability, identification of local risks and development of plans to manage and adapt to climate change.

Elevating the patient, carer and community voice

- Work together to ensure engagement of our local people elevates these voices.
- Collectively use our networks and relationships to hear from a more diverse group of people, including those who do not routinely engage with health and care services.
- Commit to community led engagement and approaches that will strengthen our understanding of our communities, their views and experiences.
- Work hard to put people and communities at the centre of how we work together to improve the health and well-being of our residents.



South West
London
Integrated
Care System

**Integrated Care
Partnership
Priorities Fund**





- The new ICP Priorities Fund for 2023-25 will be targeted to support delivery of the Integrated Care Partnership’s strategic plan and priorities.
- This funding will help accelerate the delivery of our system-wide priorities and agreed actions

ICP Priorities Fund financial allocation detail

Funding allocation	£3800k	£950k						
		£800k across all four priorities listed				£150k across all three cross-cutting schemes listed		
Priority	Workforce	Children and young people	Older People	Positive mental wellbeing	Prevention and self-care	Green	EDI	Elevating patient and carer voice
Bid cap	Min: £50k Max: £450k	Min: £25k Max: £150k				No minimum Max: £40k		

ALIGNMENT TO ICP PRIORITIES

Strong schemes working at scale, that support the delivery of our system-wide priorities and actions

1

FUNDING

A clear indication of how funding will be spent

2

IMPACT

Applications that articulate the impact they will make and can evidence why their proposed scheme is credible

3

MEASUREMENT

Applications that clearly demonstrate how they will measure that impact.

4

ICP Priorities fund Applications



We are looking for....



Shortlisting process:

- Shortlisting will be undertaken in pairs of ICP Strategic Priorities SME and one other ICB Exec or Director.
- We have additional short listers available to review bids where conflicts of interest occur.
- Shortlisted schemes will be reviewed by finance prior to invitation to panel.

Preparation for awarding panel:

- Shortlisted bidders will have the chance to attend and present their scheme and answer questions.
- The panel will be comprised of ICP Board members with VCSE and Healthwatch input.
- The panel details will be finalised and shared in due course

The role of Place

The role of Place is different in the ICP Priorities Fund and is primarily to facilitate collaboration both within Place and across multiple Places. This may include:

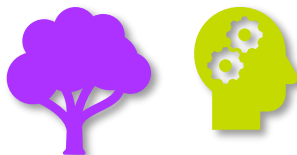
- Holding information sessions for local stakeholders to share ideas and facilitate collaboration
- ICB staff (and others) coming together to share emerging ideas to ensure more multi-borough and system wide applications
- To review shortlisted bids to ensure bids are not existing schemes/duplicative and are in alignment with Place development plans



Further information sessions

Green agenda

Monday, 09 October
12:00 – 13:00



Positive mental wellbeing

Friday, 13 October
13:00 – 14:00

General drop-in session

Tuesday, 10 October
10:00 – 11:00



Children and young people

TBC

Workforce

Thursday, 12 October
09:00 – 11:00



Older people

Wednesday, 18 October
Time tbc

Equality, diversity and inclusion

Friday, 13 October
10:00 – 11:00



Prevention and self-care

TBC



South West
London
Integrated
Care System



Health Inequalities Fund



- As part of the NHS national priorities to focus on health inequalities, South West London was awarded £4.3 million funding for 2023/24.
- We want to build on and scale up the work that has been delivered at system, Place and neighbourhood level, to continue to reduce health inequalities especially at a time where more people continue to be impacted by the current cost of living crisis.
- This funding is for implementing targeted health inequalities interventions for local populations, addressing Core20PLUS5 and the ICP strategy's priorities for health inequalities:

Scaling up innovation to improve outcomes for people in our most deprived areas and our most vulnerable people

Addressing the wider determinants of health and well-being

Empowering our communities to improve their health and wellbeing

- Successful schemes will be authorised to run until the end of March 2025.
- Whilst we do not yet know the amount that will be allocated to South West London for 2024/25, we anticipate it to be similar to £4.3 million.





Available funds for new projects

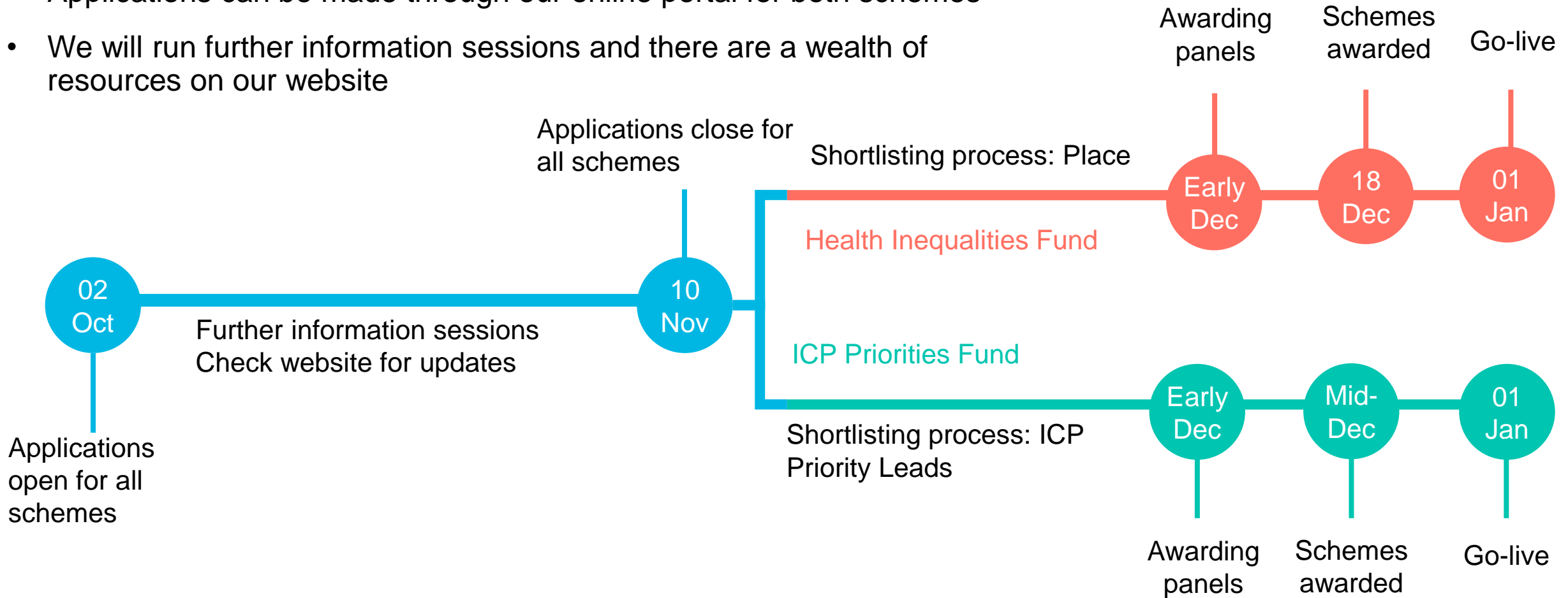
- Places will receive an allocation of the funding using a needs-based approach.
- Funds allocation were weighted by needs, using ONS population statistics 2021, Core20 percentages and a needs-based tool.
- The amount shown is for 2023/24 and to be spent within 2023/24.
- Similar amounts available for 2024/25.

Place allocation	2023/24	2024/25
Croydon	£295,465.30	£295,465.30
Kingston	£45,118.27	£45,118.27
Merton	£94,659.90	£94,659.90
Richmond	£58,668.71	£58,668.71
Sutton	£96,702.49	£96,702.49
Wandsworth	£161,885.33	£161,885.33



Combined process for this year

- Applications opened today and run until Friday, 10 November at 23:59
- Applications can be made through our online portal for both schemes
- We will run further information sessions and there are a wealth of resources on our website





South West
London
Integrated
Care System

Portal demonstration



Voluntary, Community and Social Enterprise (VCSE) Alliance



Sara Milocco

South West London Voluntary,
Community and Social
Enterprise (VCSE) Alliance
Director

07540 720103

sara.milocco@cvalive.org.uk

The Voluntary, Community and Enterprise sector (VCSE) in South West London is a key strategic partner with an important contribution to make in shaping, improving and delivering services, and developing and implementing plans to tackle the wider determinants of health.

The VCSE Alliance can support the community and voluntary sector to be a key partner to co-produce and deliver innovative health and care solutions for our local priorities.

If you are an ICS partner and would like to be linked up to a voluntary or community sector organisation with expertise in the area you are proposing in your application, then please contact Sara who can put you in touch.

This can include if:

- you have a project idea but do not know who to involve in the VCSE
- you are thinking about funding elements to the VCSE sector – in terms of service delivery or particular roles to be hosted by a VCSE organisation and based in the local community.

If you are a VCSE organisation or a local group, Sara can help by putting you in contact with similar organisations in other Places so that you can explore your application at scale across more than one Place in South West London.

Elevating the patient, carer and community voice

For all applications to the Investment Fund (both Health Inequalities and ICP Priorities Fund) - it is important to demonstrate how we are planning to work with people and communities impacted by the proposed project and to build on what we have already heard.

This includes:

- **Inclusive representation of our people and communities** – involving the right people in the right conversations and amplifying the voices of people with lived experience and carers, inclusive of all protected characteristic groups and people of all socioeconomic backgrounds.
- **Starting early and continuing our conversations** – build on what we have already heard and involve people at the beginning of our plans.
- **Guided by insight and intelligence** – ensuring that we take a population health approach which is informed by what both our local quantitative and qualitative data tells us.
- **Adopting principles of coproduction** – where possible we work in a way which involves people who use health and care services, carers and communities in equal partnership. We engage with people early so that their views can meaningfully influence the design, delivery, and evaluation of health and care services.

Helpful links:

[Healthwatch community insights reports](#)



[Insight from South West London engagement](#)





Applications are now open

Applications open today and close on Friday, 10 November at 23:59 for both Funds



Apply online

Applications can be made through our online portal



Visit our website

Please visit our website for further information and support materials
<https://www.southwestlondonics.org.uk/our-work/investment-fund/>



Further sessions are planned

We are hosting follow-up and further information sessions over the coming weeks



South West
London
Integrated
Care System

Integrated Care
Partnership
Priorities Fund



Health Inequalities
Fund

Summary

- We are really pleased to be able to launch a second year of the South West London Investment Fund
- We listened to feedback, from those who applied or who were involved in year one and have improved our process based on that.

Questions and answers



You can send follow-up questions to
swl.investmentfund@swlondon.nhs.uk

Please feel free to raise your hand or
post a question in the chat

